

Bembino

Instructions for Installing Version 1.1 on Windows

Below is the installation section from the booklet “Bembino” (available as a .pdf file):

The “Bembino” Font Family comprises 16 font files. There are 5 Regular (upright, Roman) files and 5 Italic files. These styles all appear under the name “Bembino” when loaded into a typesetter. Since cursive and fraktur are not defined font styles, the remaining 6 font files appear under a different font names. The 5 cursive weights are called “Pietro” (after the archbishop who commissioned the original font Bembo) and the single fraktur font appears as “Frangelico” (a small pun on fraktur) in a font listing.

Bembino is distributed on a CD or as a single compressed directory (.zip file) containing all 16 fonts. To install the fonts on a PC running Windows it is usually simply enough to copy the files from the zip archive into the WINDOWS/Fonts directory on the main hard-drive. Windows-7 users can use the install option of the Font Manager to copy the files.

If you have installed a previous version of Bembino on a Windows machine, you will have to delete the old version before you can install the new one, since Windows will not automatically overwrite font files. Once installed, the font names should appear in the Font Dialog boxes or pull-down menus for most text processors (for example Microsoft Word) or typesetting software (for example Adobe InDesign).

Remember, Bembino is free!

If you received Bembino on a CD

1. Insert the CD into the CD drive.
2. Open directory and go to “Bembino”, which contains 16 .otf files.
3. Select all files (^A in the file list).
4. Right-click mouse and select “install fonts”. See the ‘install cd.jpg’ picture for an example.

If you received a .piz file via email

1. Save the .piz file to your desktop
2. Rename the .piz file to .zip
3. Follow the instructions for a .zip file below

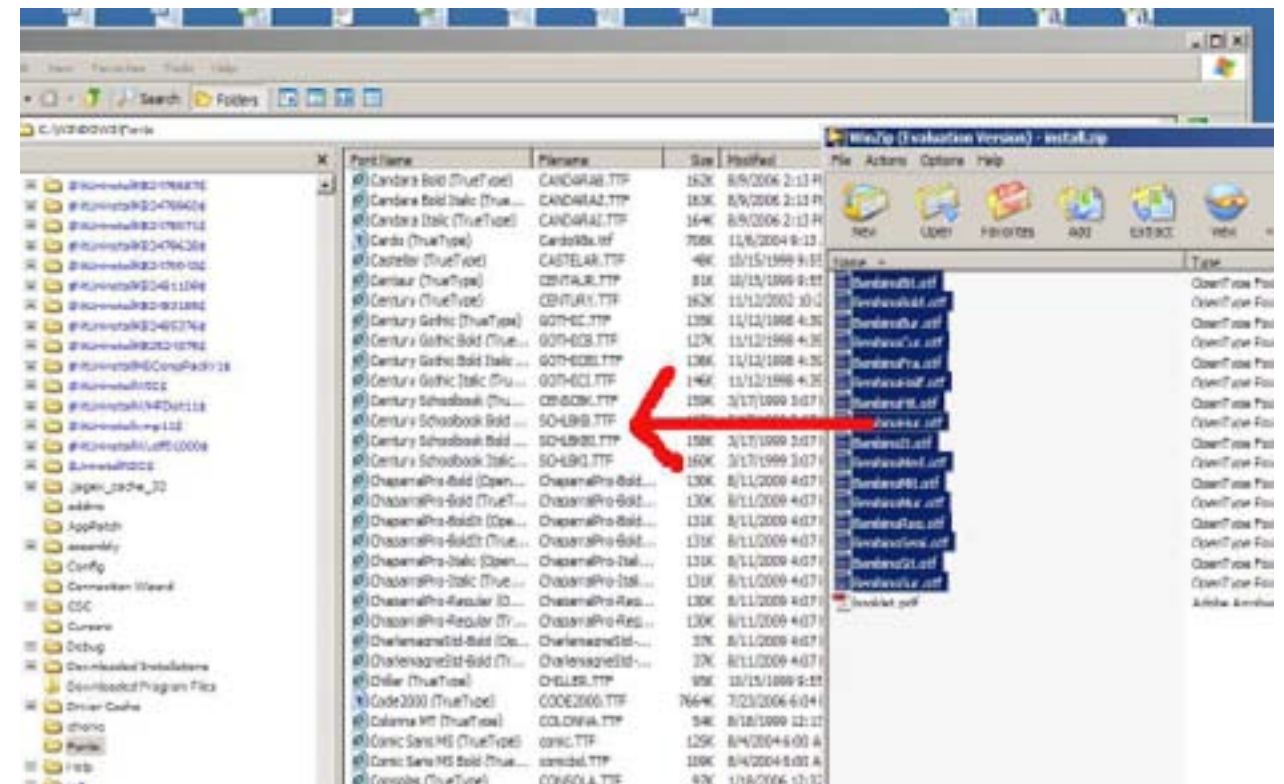
If you received a .zip file via email

1. Double-click on the install.zip file attachment on this email.
Click “Open” if you are asked to trust this file.
2. Select the 16 .otf files (Shift and the arrow keys) in the zip file.
3. Open Explore [not explorer] by right-clicking on the ‘Start’ button (bottom left on your computer screen) and select ‘Explore’.
4. Expand the right tree to show the contents of the C:\WINDOWS directory.
5. Select the Fonts folder in the tree view.
6. Drag the 16 fonts from the zip file into the list of fonts [left click and drag the mouse from the zip window to the explore window]. See ‘install.jpg’ picture for an example].

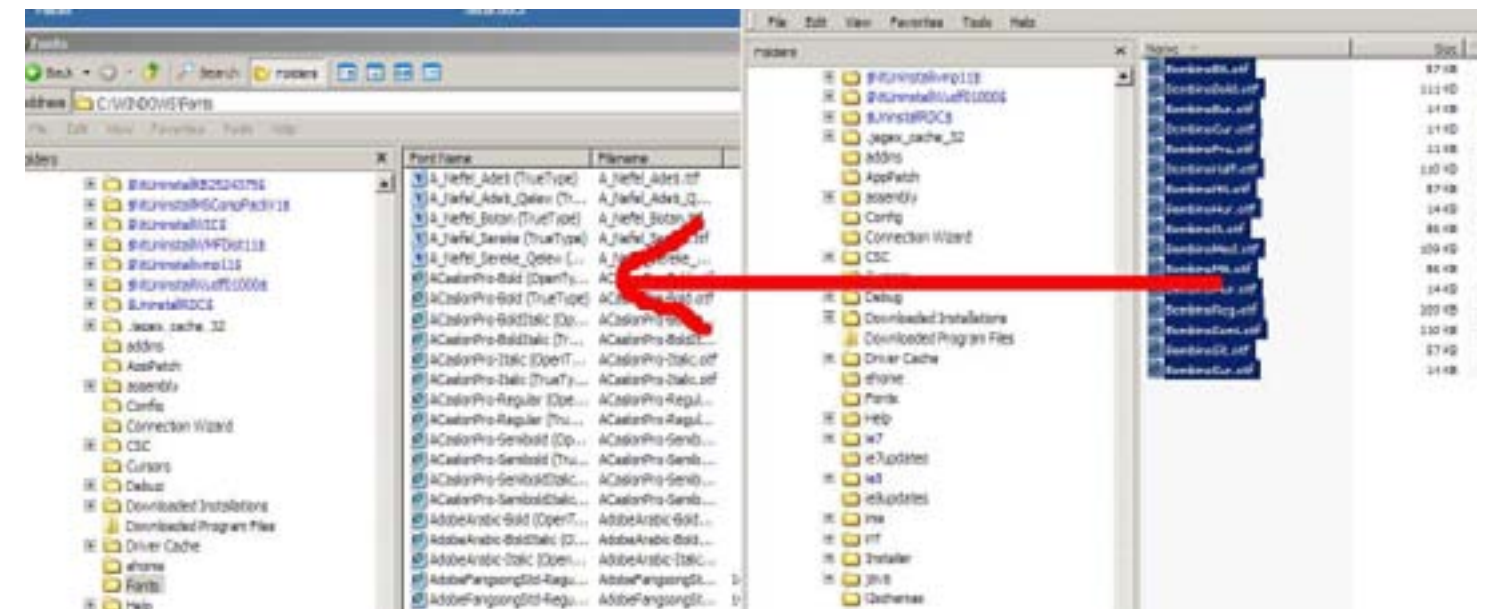
Once you have performed either of these install steps

7. Start Word (or a typesetting program) and look for ‘Bembino’ as a font in the Font selector.

Please send suggestions, and, if wished donations (which may be tax-deductible), to the Research Group.



installing from a CD



installing from a zip file